



Simio Solutions Series

Fundamentals of Simio: Basic
Features and How to use Simio
for New Users

February 14, 2024



Jeff Smith

VP for Training and
Academic Programs
and Technical Fellow
at Simio LLC

jsmith@simio.com

- 35 years of simulation consulting and training.
- 32 years as a Professor of Industrial Engineering teaching simulation at the undergraduate and graduate levels.
- PhD and MS in Industrial Engineering, Penn State University. BSIE, Auburn University.

Abstract

This session is aimed at new and soon-to-be-new Simio users. We will demonstrate the basic features of Simio and the model-building process by building a model - **no idle talk and hand-waving** - instead, we'll get knee-deep in Simio by building and running a model, discussing features and answering questions along the way.

Presentation Outline



- Main Simio Features
 - Objects / Libraries / Standard Library
 - Animation
 - Experimentation
 - Data Handling
- Building Simio Models
 - Placing and Connecting Objects
 - Setting Properties
 - Using Data (tables)
 - Adding Animation
- Experimentation

One thing to keep in mind before we jump in...

Simio is incredibly powerful and has many, many features. We are just scratching the surface.

I chose depth with a small number of features rather than breadth with a large number.

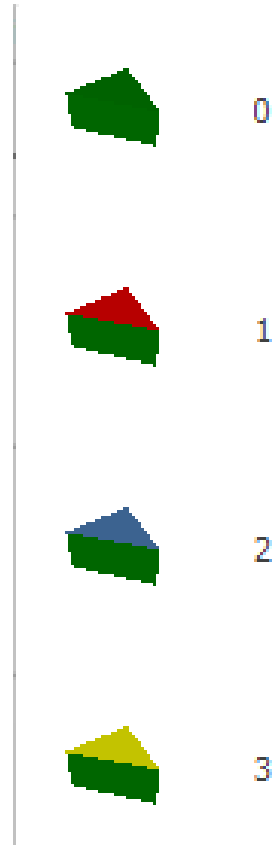
If there are things that you'd like to see more of, let us know in the feedback!

Symbols and Symbol Lists – 3 Critical Concepts

Symbol



Symbol List



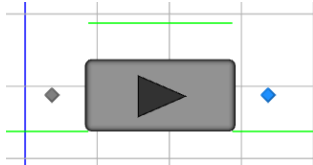
Index/Pointer



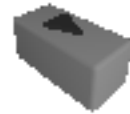
ModelEntity.Picture

Symbols and Symbol Lists – 3 Critical Concepts

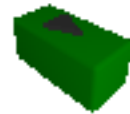
Symbol



Symbol List



Starved (0)



Processing (1)



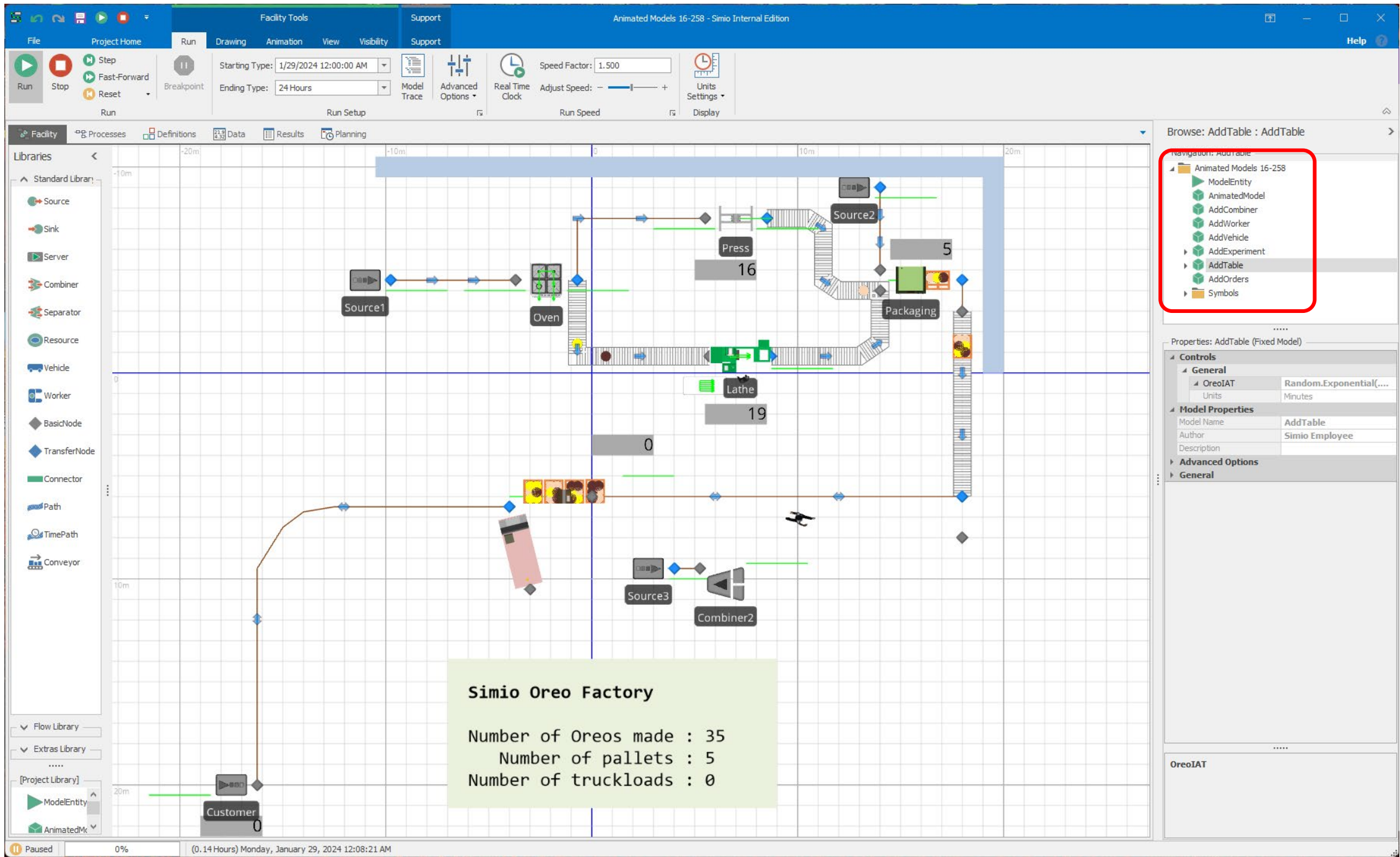
Blocked (2)



Failed (3)

Index/Pointer

← Server.ResourceState



Simio Oreo Factory

Number of Oreos made : 35
 Number of pallets : 5
 Number of truckloads : 0

Browse: AddTable : AddTable

Navigation: AddTable

- Animated Models 16-258
 - ModelEntity
 - AnimatedModel
 - AddCombiner
 - AddWorker
 - AddVehicle
 - AddExperiment
 - AddTable
 - AddOrders
 - Symbols

Properties: AddTable (Fixed Model)

Controls

- General
 - OreoIAT: Random.Exponential(...)
 - Units: Minutes
- Model Properties
 - Model Name: AddTable
 - Author: Simio Employee
 - Description:
- Advanced Options
- General

OreoIAT



Simio Solutions Series

Fundamentals of Simio: Basic
Features and How to use Simio
for New Users

February 14, 2024